

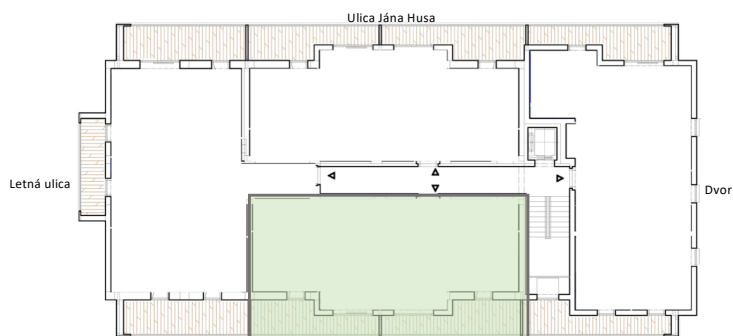
## B4\_TROJIZBOVÝ BYT

2.NP

|    |                       |                     |
|----|-----------------------|---------------------|
| 1  | PREDSIEŇ              | 3,02m <sup>2</sup>  |
| 2  | WC                    | 2,62m <sup>2</sup>  |
| 3  | KUCHYŇA               | 5,54m <sup>2</sup>  |
| 4  | ŠATNÍK                | 4,87m <sup>2</sup>  |
| 5  | IZBA                  | 11,54m <sup>2</sup> |
| 6  | OBÝV.<br>IZBA+JEDÁLEŇ | 29,51m <sup>2</sup> |
| 7  | IZBA                  | 12,35m <sup>2</sup> |
| 8  | ŠATNÍK                | 1,78m <sup>2</sup>  |
| 9  | KÚPEĽŇA               | 3,81m <sup>2</sup>  |
| 10 | TERASA                | 10,39m <sup>2</sup> |
| 11 | TERASA                | 9,61m <sup>2</sup>  |

**CELKOVÁ PLOCHA BYTU** 75,04m<sup>2</sup>

**CELKOVÁ PLOCHA BYTU S TERASOU** 95,04m<sup>2</sup>



Ulica M.Čáka

Ulica Jána Husa

